



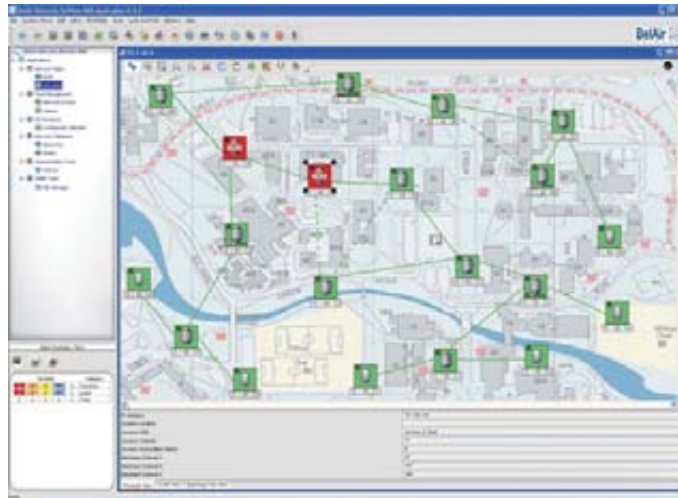
BelView Network Management System (NMS)

The BelView Network Management System (BelView NMS) is a comprehensive software package that allows network operators to easily configure, monitor and manage a complete network built with any combination of BelAir Networks wireless mesh products. The BelView NMS is designed to ensure that these networks are easy to install and maintain – maximizing utility while minimizing cost to both end users and network administrators.

Wide-area wireless broadband (Wi-Fi, WiMAX, Cellular) networks built with BelAir's industry-leading portfolio of wireless networking products for voice, video and data applications are easier to design and maintain with the BelView NMS. The comprehensive set of management features includes Fault, Configuration, Performance, Inventory and Security Management that provides for ease of installation, capacity planning, and proactive planning for smooth network operations.

Client/Server Architecture

BelView NMS is built on a scalable client server design with each server currently supporting up to ten clients for multi-user, multi-site management capabilities. The server utilizes a "perpetual" database to store and export network management information. The users can be given different access depending on their role in network operations. Each client provides an intuitive Graphical User Interface (GUI) for the various management tools that are provided within BelView NMS and supported on either Microsoft Windows XP or SUN Solaris. Furthermore, the client and server can each be on different operating systems.



Configuration Management

BelView NMS Configuration Manager is a scalable multi-dimensional platform that provides Auto-discovery, Topology Views, VLAN and RSTP configuration with current support for up to 500 wireless mesh nodes in a single network. Leveraging the Graphical User Interface, Network Administrators can launch the Auto-discovery feature which automatically locates BelAir wireless mesh nodes. Once discovered, the nodes are displayed in a topology view which also shows the connecting links (backhaul and access), link status and the number of clients that are connected to

Features

- Scalable client/server architecture with support for up to ten clients
- Centralized network configuration with auto discovery of wireless mesh nodes
- Fault Management capabilities that provide proactive and reactive planning
- Performance Monitoring with intuitive graphical performance management reports
- Security Management
- Integration into existing Management Systems like HP OpenView and IBM NetView

each node. Topology views can be customized by importing a bitmap image such as a street map, aerial photograph or campus. Nodes can then be intelligently grouped and placed in their appropriate location on the imported image.

- Node configurations can be downloaded to a single node or groups of nodes – streamlining the install process
- BelView NMS Upgrade Wizard provides a means to rapidly deploy new software releases to individual nodes, groups of nodes, or the entire wireless mesh network
- User Segmentation via VLAN assignment and SSID to VLAN mapping
- QoS and Priority assignments on a per user basis
- Inventory management capabilities with individual node information, including node configuration and current software version

Fault Management

BelView NMS provides extensive fault management capabilities by delivering real-time monitoring of the wireless mesh network that allows for both proactive and reactive planning.

- Set network traps and alarms on every node; alarms are then captured in the event log
- Categorize by severity, node location, time of day, fault type and status of the alarm (open, acknowledged or closed)
- Color coded alarms by severity (major, minor, critical, information)

Performance Management

The BelView NMS provides network administrators with the ability to analyze, filter and aggregate network performance data on a per node basis.

- Customize aggregation policies
- Multi-level thresholding
- Intuitive graphical performance management reports

Security Management

The BelView NMS supports extensive security management features including multiple user groups allowing the administrator to control access while allowing multiple users to view the mesh network. BelView supports secure SNMP access to the BelAir mesh products.

- Fine grained and extensible authorization including support for users, groups, roles, operations and object views
- Secure authentication and access control including time limited passwords
- Full auditing capabilities including configuration changes, log in times, etc.
- Supports SNMPv3 for secure access to BelAir mesh products

Minimum System Requirements

- Windows XP requirements
 - Pentium 4 1.4 GHz (server and client); 700 MHz (client only)
 - 512 MB (server); 256 MB RAM (client only)
 - 200 MB free disk space (server); 150 MB (client)
- Sun Solaris requirements
 - Solaris 10 and Mozilla Browser
 - Ultra -5 333MHz SPARC
 - 256 MB RAM
 - 320 MB (install); 200 MB (runtime) free disk space

Note: Server and client can be run on the same machine or on different machines. Server and client can use different operating systems.

Ordering Information

BelView NMS can be ordered in the following node capacities: up to 10, up to 25, up to 50, up to 250 and up to 500. A 30 day, 10 node BelView NMS trial license is delivered with each BelAir Networks node.



Copyright© 2007 BelAir Networks.
BelAir Networks products and associated technology are protected by one or more of the following US patents: 7,171,223 / 7,164,667 / 7,154,356 / 7,030,712 / D501,195.
Specifications may vary by region.

To find out more, contact BelAir Networks:

info@belairnetworks.com
sales@belairnetworks.com
1-877-BelAir | (1-877-235-2471)
1-613-254-7070

www.belairnetworks.com

BDMA09920-A02