



BridgeWave

COMMUNICATIONS

SLE100

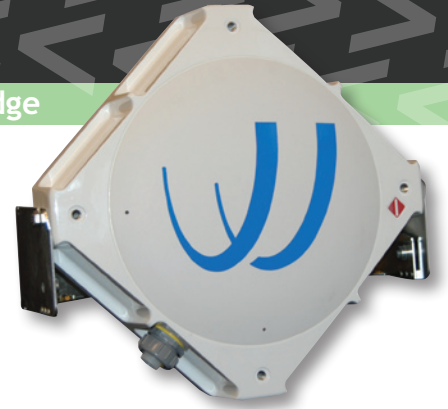
Simple, safe and secure, full-rate 100 Mbps wireless Ethernet bridge

BridgeWave's SLE100 point-to-point bridge provides highly reliable 100 Mbps full-duplex, half-mile (800 meter) connectivity between buildings. The SLE100 seamlessly extends remote LANs and integrates easily into your existing network with its high level of standard network management features such as detailed port statistics, SysLog, RADIUS authentication, and SNMP.

The SLE100 radio is designed for "point-and-play" operation; no RF configuration required. Power-over-Ethernet simplifies installation using existing CAT5 cable infrastructure.

The SLE100 operates in the interference-free, license-free (in the U.S. and Canada) 60 GHz band yielding rapid and flexible deployments, while narrow "pencil-beam" antennas provide Low Probability of Detection (LPD) and Low Probability of Intercept (LPI) for highly secure transmission. The SLE100 is also available with FIPS-197 certified 256-bit AES Encryption as an option.

BridgeWave is the leading supplier of gigabit RF connectivity solutions for enterprise, service provider, and government applications. BridgeWave is an ISO9001 certified supplier and has proven reliability with thousands of radios deployed worldwide.



BridgeWave
SLE100

SIMPLE, SAFE, AND SECURE, SOLUTIONS FOR:



Enterprise

Server centralization, remote data storage and backup, leased line replacement.



Healthcare

Secure, HIPAA-compliant connectivity, medical office, lab network access, real-time imaging & records, application connectivity.



Education

High-performance campus connectivity, WiFi and security camera backbone.



Government/Municipalities

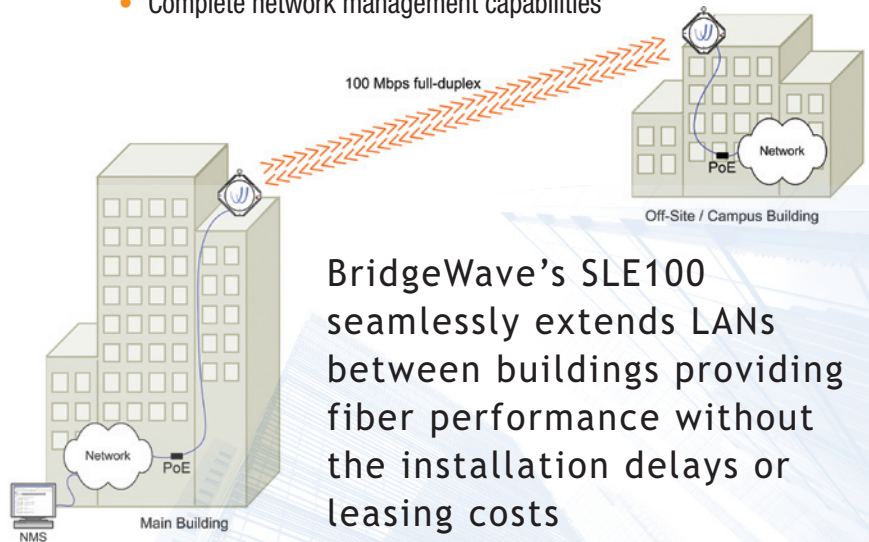
Video surveillance systems, traffic control and monitoring, WiFi/4.9GHz backhaul.



Service Provider

High-capacity business services, fiber extensions, cellular/WiFi/WiMAX backhaul, redundant fiber overlays, mesh.

- No license required (in the U.S. and Canada)
- Plug and play operation
- Power-over-Ethernet simplifies installation
- All-weather reliability at 1/2 mile distances
- Immune to interference and interception
- True 100 Mbps rate with ultra-low latency
- Complete network management capabilities



BridgeWave's SLE100 seamlessly extends LANs between buildings providing fiber performance without the installation delays or leasing costs



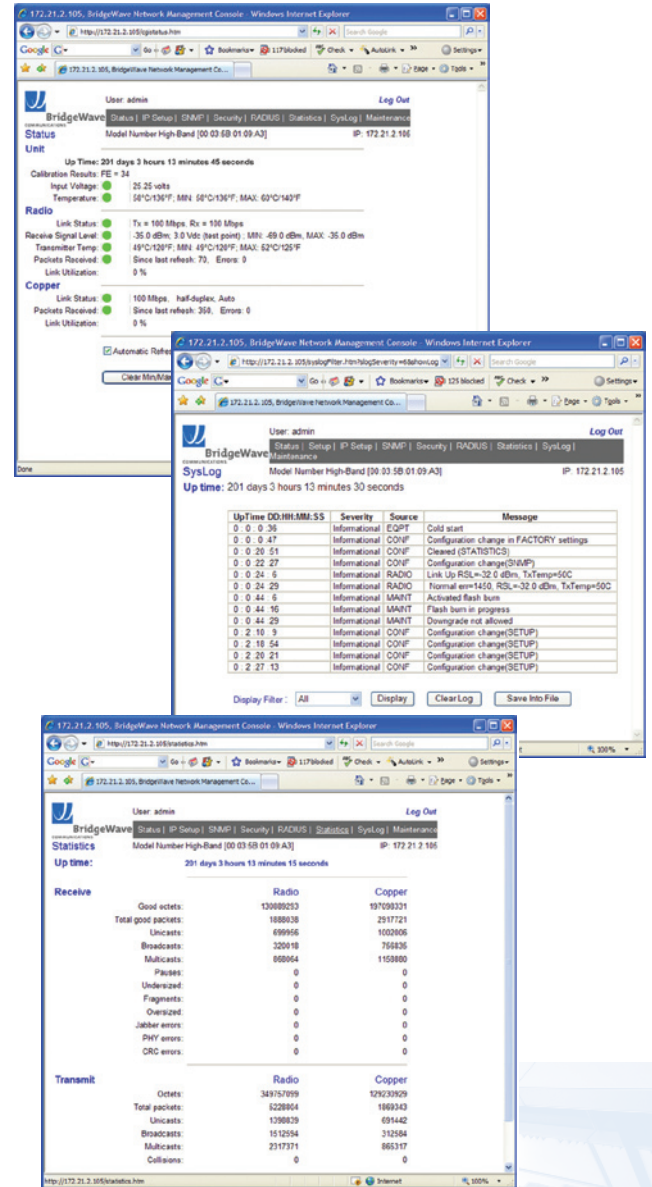
BridgeWave

COMMUNICATIONS

SLE100

Simple, safe and secure, full-rate 100 Mbps wireless Ethernet bridge

| | |
|--------------------|--|
| Data Rate | 100 Mbps full-rate, full-duplex |
| Latency | < 220 µSec |
| Ethernet Interface | 10/100 Base-TX with RJ-45 connector – up to 100m CAT5 cable Maximum Ethernet frame length: 1632 bytes |
| Security | Inherently secure ultra-narrow beamwidth Option: FIPS certified 256-bit AES Encryption |
| Management | Web-based (HTML) embedded management agent SNMP Support: MIB-II And BridgeWave enterprise MIB SysLog (RFC 3164, RFC 3195) event support RADIUS client support |
| Power | Power-over-Ethernet, 100–240 VAC input 45 watts max power consumption |
| RF Interface | 58.1/62.9 GHz (FDD) digitally modulated with forward error correction RS (204,188), 140 MHz bandwidth Link distance: 100 ft to 3000 ft (30 m to 900 m) |
| Antenna | Integrated 10" (25 cm), 40 dBi gain, 1.4° beamwidth |
| Mount | Pole Mount: 2" to 4.5" (5 cm–11 cm) O.D.; wall mount bracket included |
| Size | 12" w x 12" h x 4.7" d (30 cm x 30 cm x 12 cm) |
| Weight | Radio: 11.9 lbs (5.4 kg); Mount: 6.6 lbs (3.0 kg) |
| Environmental | Operating Temperature: -22°F to +122°F (-30°C to +50°C) Operating Altitude: 14,764 ft (4,500 m) |
| Wind Loading | 50 lbs force @ 100 MPH |
| Regulatory | Safety: UL Listed, CE Mark, FCC 1.1310 General Population RF MPE limits RF Certifications: U.S. FCC Part 15.255; Industry Canada RSS-210 |
| Installation Kit | Voltmeter test cable, PoE adapter, visual alignment tool |



ISO 9001
FM 59394

www.bridgewave.com



BridgeWave Communications, Inc.
3350 Thomas Road, Santa Clara, CA 95054 USA
Ph: +1 (866)-577-6908; +1 (408)567-6908

© 2008 BridgeWave Communications, Inc. All rights reserved. BridgeWave, the BridgeWave logo, AdaptRate and AdaptPath are trademarks of BridgeWave Communications in the United States and certain other countries. All other brands and products are marks of their respective owners. RevB 06/08

DATASHEET